



THE HENRY FORD HOSPITAL
MEG LAB IS LOOKING FOR
VOLUNTEERS TO PARTICIPATE
IN A STUDY OF DYSLEXIA

- We are looking for individuals 9 years or older who have been diagnosed with dyslexia.
- The research will evaluate changes that take place during reading and language tasks so that we can better diagnose and treat dyslexia.
- MEG is a completely non-invasive method of monitoring brain activity.
- The natural electrical activity of your brain can be measured in much the same way as a radio antenna picks up radio signals.
- This type of MEG exam has been performed on hundreds of individuals at Henry Ford Hospital.
- \$100 stipend for participation

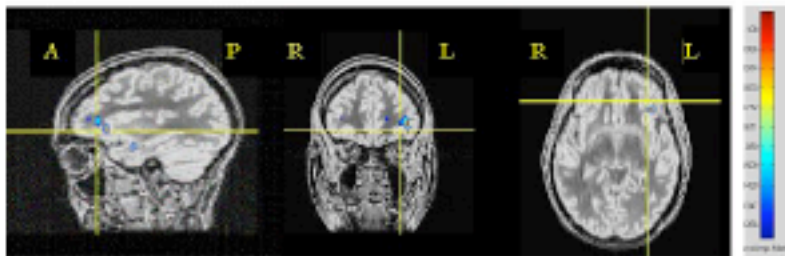
**Magnetoencephalography
(MEG)**



Exclusion Criteria

- Weigh over 300 pounds
- Non removable metal implants
- Extensive dental work (Braces)
- English is not your first language

MEG Results



For more information or to find out if you are a candidate please contact:

Susan Bowyer, Ph.D.

Tel: (313)916-1075

E-mail: sbowyer1@hfhs.org

MEG: a non-invasive technique to localize functioning of the brain.